



## able sheet metal

Corporate Office Location:  
614 N. Ford Blvd.  
Los Angeles, CA 90022-1107  
office@ablemetal.com

Shipping & Receiving:  
4532 Floral Dr.  
Los Angeles, CA 90022-1103

Northern California Location:  
14111 Catalina St.  
San Leandro, CA 94577-5509  
officenorthcal@ablemetal.com

TEL: (323) 269-2181  
FAX: (323) 269-2184

TOLL FREE: (800) 699-2253  
www.ablemetal.com

TEL: (510) 483-9966  
FAX: (510) 483-9960

# FIRE RESISTANT MULTI-GUARD LOUVER VENT (MGV)

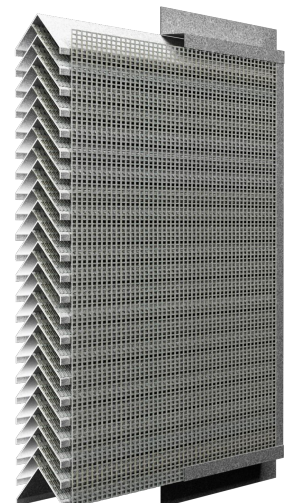
US PATENT AND TRADEMARK APPLICATION 63/387,352

PRODUCED FROM TOP-QUALITY INDUSTRY MATERIALS (ASTM A-653 GALVANIZED STEEL, ASTM A-792 GALVALUME). DESIGN ALLOWS FOR HIGH AIR FLOW WITH RESTRICTION OF DIRECT HEAT/FLAME PENETRATION. GUARDED BY 1/8" OR 1/16" GALV STEEL MESH AND INTUMESCENT TAPE. TESTED & CERTIFIED BY CAL-FIRE APPROVED LAB FOR ASTM E2886 STANDARDS. WUI COMPLIANT. OTHER STYLES, MATERIALS (STAINLESS STEEL, COPPER) AVAILABLE UPON REQUEST.

FRONT 3D VIEW



BACK 3D VIEW



FRONT VIEW

SIDE VIEW

