



Quality Since 1946

able sheet metal

Corporate Office Location:
614 N. Ford Blvd.
Los Angeles, CA 90022-1107

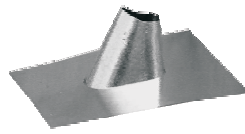
Shipping & Receiving:
4532 Floral Dr.
Los Angeles, CA 90022-1103

Northern California Location:
14100 Doolittle Dr.
San Leandro, CA 94577-5540

TEL: (323) 269-2181
FAX: (323) 269-2184

TOLL FREE: (800) 699-2253
www.ablemetal.com

TEL: (510) 483-9966
FAX: (510) 483-9960



SPECIFICATIONS FOR PIPE FLASHINGS (SOUTHERN CALIFORNIA)

STANDARD PIPE FLASHINGS ARE MADE OF 26 GAUGE GALVANIZED STEEL, ASTM A-653. THE OPENING AT THE TOP OF THE RISER (CONE OR NECK) IS APPROXIMATELY 1-3/4" DIAMETER, FOR USE WITH 1-1/2" PIPE. THE RISE IS ABOUT 2-3/4". THE STANDARD BASE IS 11" X 13-1/4".

FHA PIPE FLASHINGS ARE MADE OF 26 GAUGE GALVANIZED STEEL, ASTM A-653. THE OPENING AT THE TOP OF THE RISER (CONE OR NECK) IS APPROXIMATELY 1-3/4" DIAMETER, FOR USE WITH 1-1/2" PIPE. THE RISE IS ABOUT 2-3/4". THE FHA BASE IS 15" X 18-3/4".

ALL-PITCH FLASHINGS CAN BE USED ON A FLAT ROOF, OR ON SLOPES UP TO A 5/12 PITCH.